



PEEL & STICK WOOD WALL PLANT

PREPARATION



Step 1

Acclimate Art3d Wood Wall Plant

Acclimate the Art3d Wood Wall Plant to its new environment for 48-72 hours. Higher humidity areas require an additional 2 days of acclimation. This will ensure that your Stikwood becomes accustomed to the climate of its new space.



Step 2

Check Wall Moisture

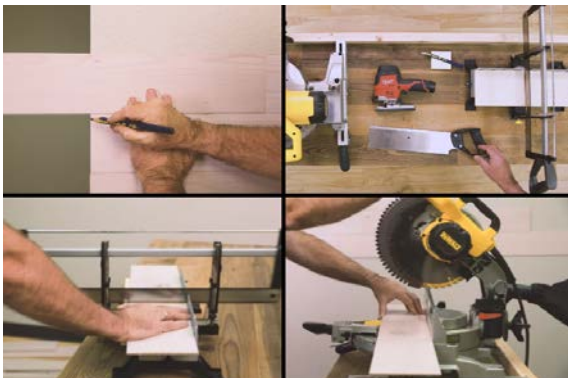
If required, prime surface and allow to dry until the moisture content in the wall drops to 8 percent. This usually requires 4-5 days. Once dried, check the moisture of the wall with a moisture meter tool.



Step 3

Clean Surface of Wall

Remove any picture frames that may be on the wall and pull any nails out with a hammer. Clean the surface of the wall so that it is free of dirt and debris.



Step 4

Cutting

There are multiple ways for you to cut Art3d Wood Wall Plant. Choose between different saws. Mark the Art3d Wood Wall Plant with a pencil to know where to cut. Cut your Stikwood with a hand saw, chop saw, or jig saw

INSTALLATION



Step 1 Measure Your Wall

Measure 20" from the center of the wall



Step 2 Reference Line

Draw a line with a pencil along the level to create your reference line.



Step 3 Place the First Piece

Remove the adhesive strips off of the back of the plank and place on the reference line. Roll over the plank with the J roller. We use a pressure sensitive adhesive and requires enough pressure to ensure contact.



Step 4 Finish Your Wall

Stagger planks, making sure not to leave any gaps between two planks. It can be difficult to fit a plank in-between two surrounding planks. Continue to install until the wall is filled. Tip: when installing, be sure that the seams do not match up to one another.

Installing Around Switches and Outlets



Step 1

Turn Breaker Off

Since you are working with electric, it is important to turn off the electricity to the outlet or switch that you're working around. To ensure that the power is all the way off, go to your breaker and flip the switch to the room you're working in.



Step 2

Remove Face Plate

Remove face plate by loosening screws and pull switch out 1/2 inch away from the wall.



Step 3

Loosen Switch Screws

Using a screwdriver, loosen the screws on the switch.



Step 4

Place a Spacer

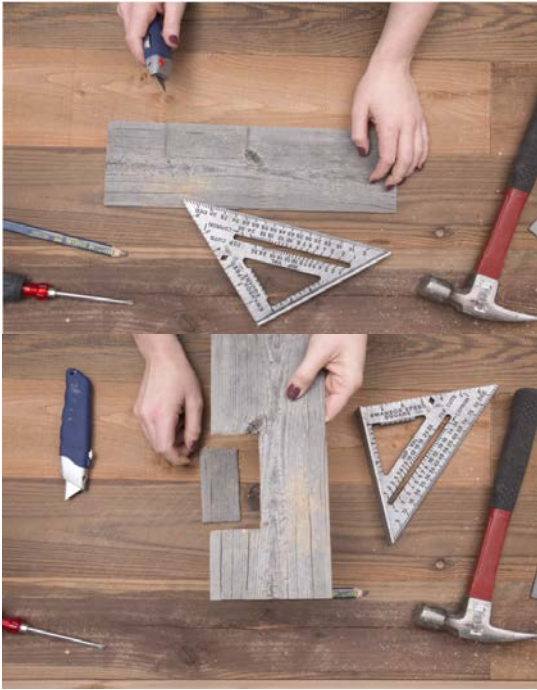
Place 1/2" plastic or wood spacer between switch and wall. You can also use a scrap piece of Stikwood.



Step 5

Determine Cuts

Determine where to cut Art3d Wood Wall Plant by marking where your notch will be and mark your cross cut.



Step 6

Cut Art3d Wood Wall Plant to Measurements

Cut Art3d Wood Wall Plant to match measurements using a utility knife or any of the other tools shown. Before removing the adhesive strips, dry fit your piece around the switch. Install planks until all four sides of the outlet are covered.



Step 7

Install Face Plate After Application

Place screws back into switch to install and then install faceplate of switch to finish. Depending on your switch or outlet, there is a possibility that you may need longer screws to install.